

PRODUCT INFORMATION

Item number KR-2156  
Item description Bagged Vacuum Cleaner

1.1.A The unequivocal identification of the product (type of product, trademark, trade name, model and possibly serial number)

SLX217 43X27MM

\*\*\*  
**TRISTAR** CE

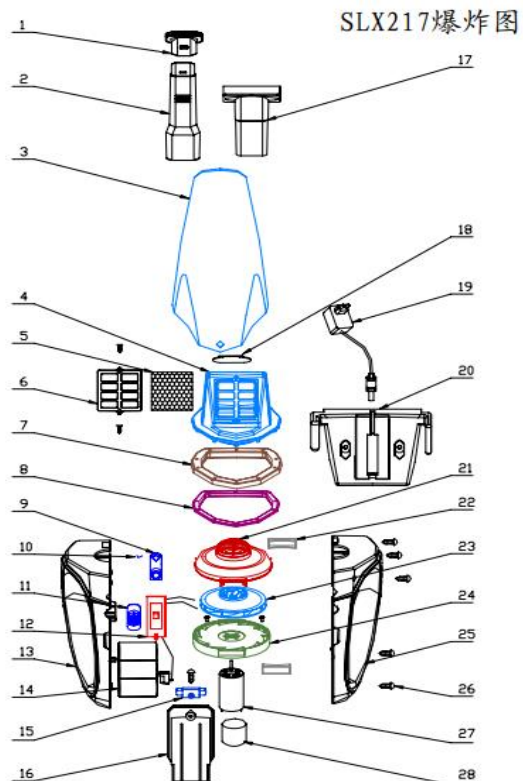
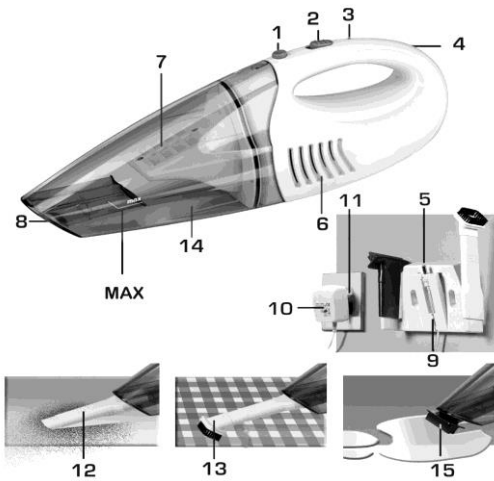
Dust Buster  
Input: 11V d.c. 250mA  
Motor power: 45W Battery voltage: 7.2V  
Model No.: KR-2156  
Batch No.: T21412

Do not immerse in any liquid / Niet in water onderdompelen  
Ne pas plonger dans l'eau / Nicht ins Wasser hineintauchen

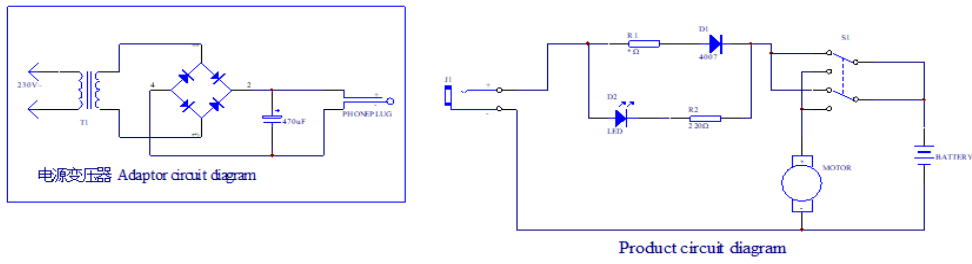
**Tristar Europe B.V.** Jules Verneweg 87  
5015 BH Tilburg | The Netherlands | [www.tristar.eu](http://www.tristar.eu)  
Use only with model: SEU006A-110025 supply unit



1.1.B A disassembly map or exploded view

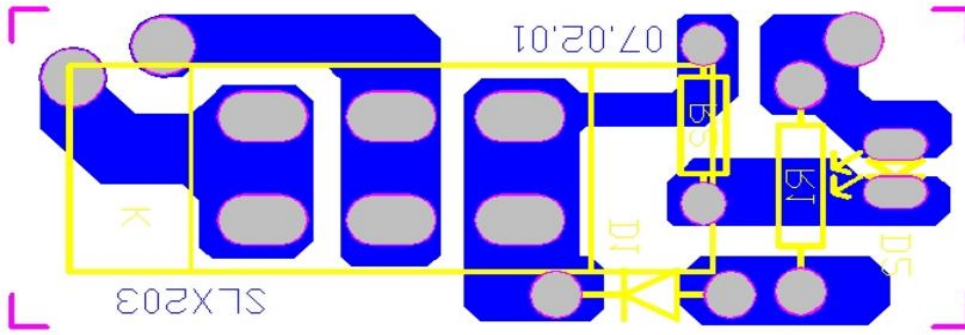


### 1.1 C Wiring and connection diagrams

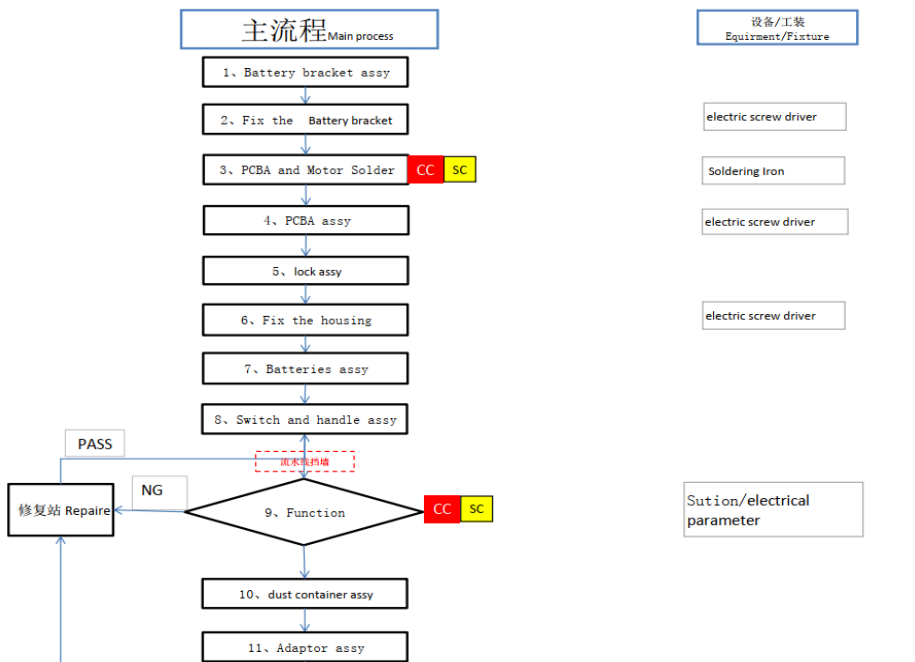


除SLX203C、SLX217C外的电路图

### 1.1 D Electronic boards diagrams



### 1.1 E List of necessary repair and test equipment



## 故障现象和故障排除列表 Symptom and troubleshooting list

- ✔ Troubleshooting by yourself
- ✔ To ensure that you do not encounter any problems, it is important to empty the dust container regularly and take this opportunity to check the filters and clean them if they are dirty. However, if you do encounter any problems with the appliance, use the following table to determine whether you can solve the problem yourself
- ✔ Before trouble shooting, switch off the appliance and disconnect the power plug from the socket

Problem	Possible cause/solution
Appliance cannot be switched on	The rechargeable battery is completely empty: the LEDs on the handle are no longer illuminated. Switch off the appliance and charge the rechargeable battery
The appliance cannot be charged (LED does not light up)	The mains adapter or appliance is not correctly inserted: Check whether the appliance is properly in place in the wall mount. Check whether the mains adapter is seated correctly in the socket
The rechargeable battery is fully charged but the appliance is hardly picking up any dirt	The dust container needs to be emptied or the filter needs to be cleaned
Operating duration is becoming ever shorter.	The brush roller is soiled and needs to be cleaned
The brush roller rotates slowly or irregularly	The brush roller is soiled and needs to be cleaned

210\*142mm

**TRISTAR**  
Quality shouldn't be a luxury!

[www.tristar.eu](http://www.tristar.eu)  
Total Europe B.V. | Julia Vermeeg 87 | 5015 BH Tilburg | The Netherlands

TRISTAR

KR-2156

- ☐ Instruction manual
- ☐ Gebruiksaanwijzing
- ☐ Mode d'emploi
- ☐ Bedienungsanleitung
- ☐ Manual de usuario
- ☐ Manual de utilizador
- ☐ Instrukcja obsługi
- ☐ Manuale utente
- ☐ Bruksanvisning
- ☐ Návod na použití
- ☐ Návod na použitie

**Handheld Rechargeable Vacuum Cleaner**  
Model: SLX217  
INSTRUCTION MANUAL



Attention, please do not use the appliance without reading the instructions. Please read the instructions carefully, they contain important information regarding the use of the appliance. Keep this booklet for future reference. This booklet must always be delivered together with the device in case it is handed on to other users.

**WARNING AND SPECIAL SAFETY RULES**

Do not use the appliance without its container.  
Do not use the appliance without its "dust filter". Prior to using the appliance, install the "dust filter" and make sure the container is well closed.  
Never use the appliance to suck up explosive or inflammable substances, incandescent ashes or other material, burning material, nails, pins, egg shells, any sharp object or metal items.  
Never use the appliance to suck up any other liquid than cold water.  
Never exceed the MAX level when sucking up liquids.  
When aspirating liquids, always keep the appliance in the vertical position, with the suction inlet facing downwards. Never place the appliance in any other position and never allow liquids to come into contact with the motor.  
After washing the container and/or filter, wait until these parts are completely dry before assembling them back. Do not assemble damp or humid parts.  
Don't use the device outdoors.  
Make sure the ventilation openings are never blocked.  
Don't wind the power supply cable round the device.  
Never use the device to suck up cement powder, filings, sawdust or metal powder, because they could block the filter, be abrasive to and damage the motor, causing the loss of the guarantee.  
Don't try to open the container when the device is operating, because it is dangerous.  
Recharge the device using only its recharge seat. Don't use different power suppliers or battery chargers, because it may be dangerous.  
Don't use the recharge seat to recharge or supply electrical appliances other than the device.  
Empty the container after each use.

Do not use the recharging device for other uses or other appliances.  
Do not short-circuit the contacts of the battery charger.

Do not locate the appliance near heat sources and do not throw it into fire, danger of explosion.  
Do not use the batteries included inside the appliance for other uses or other appliances.  
Do not try to replace the internal batteries. Do not disassemble the appliance.

If you need to replace the batteries, proceed as follows:

- Refer to an authorized service centre for letting your batteries be replaced.

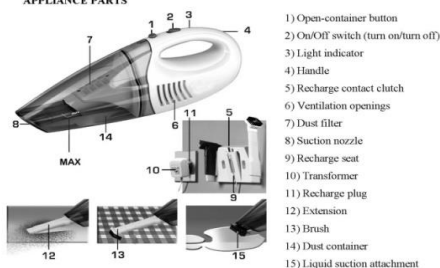
The non-working batteries included in the appliance will have to be disposed of separately as special waste, according to the norms in force at the authorized centres for the collection of special waste or at your municipality facility.

WARNING: the battery pack includes Ni-MH batteries (Nickel Metal Hydride).

IMPORTANT: the appliance must be disposed of at a centre for the collection of electrical and electronic waste (RAEE) authorized by your municipality because, since it contains Ni-MH batteries, it is rated as special waste.

Refer to authorized centres for the collection of special waste or at your municipality facility.

#### APPLIANCE PARTS



#### INSTRUCTIONS OF USE

##### Fixing the recharge seat to the wall

Fix the recharge seat (9) to the wall, on a stable, clean and dry surface.

Use only the screws included with the appliance.

Never place the seat on any container with water, full bathtubs or washbasins, sources of heat, stoves, ovens or other similar objects.

The appliance must be positioned in such a manner that neither the appliance itself nor its power supply can be reached by children and/or mentally disabled people.

**The recharge plug must be turned upwards so that the appliance can be hung with the dust container (14) facing downwards.**

#### INSTRUCTIONS OF USE

a) Take the device out of the box and remove the inner and outer packing.

b) Make sure that the "motor filter" is correctly installed (see paragraph "How to empty the container and clean the filter").

c) Make sure the on/off switch (2) is in OFF position (turned off).

d) Insert the plug of transformer into the power outlet.

e) Place the device for recharging (see paragraph "recharge of the device").

Note: For the first time you should recharge the device for at least 14 consecutive hours.

Using the device for dry suction

a) Remove the device from its recharge seat (9)

b) Use the extension attachment as final accessory (12); apply pressure on it to attach it.

The brush attachment (13) cannot be directly attached to the appliance; it must be attached to the extension attachment (12) only when you intend to use it.

The appliance can suck up crumbs even without the terminal attachment.

c) Turn on the device moving the switch (2) forward.

d) While operating the device, always keep the suction nozzle turned downwards.

e) To turn off the device, operate again on the switch (2) moving it backwards.

Note: Empty the container and clean the filter when:

The suction power decreases.

Crumbs come out from the suction nozzle.

Each time after use, before replacing the device in its recharge seat.

#### Using the appliance to suck up liquids

Warning:

Never use the appliance to suck up any other liquid than cold water.

Do not exceed the indicated MAX level when sucking up liquids (the MAX level must always be measured when the appliance is in the vertical position, with the suction inlet facing down).

When sucking up liquids, always keep the appliance in the vertical position, with the suction inlet facing downwards. Never place the appliance in any other position and never allow liquids to come into contact with the motor.

a) Remove the appliance from its recharge seat (9).

b) Use the liquid suction attachment as final attachment (15); apply pressure to it to attach it.

c) Push the switch (2) forward to switch the appliance on.

d) Keep the appliance on with the suction inlet facing down at all times.

e) Pull the switch (2) back to switch the appliance off.

Note: Empty the container immediately after use and wash the filter.

Rinse the container and the filter in cold water and let all parts dry completely before reassembling them.

#### Recharging the device

Insert the plug of transformer into the power outlet.

Make sure the on/off switch (2) is in OFF position (turned off).

Please recharge the appliance. When the appliance will be correctly positioned then the LED will display a red light. Note: when you are not using the device, keep it always placed in its recharge seat (9)

After 5 minutes of continuous use, the suction power may decrease.

Place the device in its seat and let it recharge for at least 2 hours.

If the device is used until the batteries are completely flat, it should then be recharged with a complete recharging cycle of 14 consecutive hours.

Don't let the device uncharged for a long time, because the inner accumulators may be damaged.

#### How to empty the container and clean the filter

Press the opening button (1) and unhook the dust container (14).

Remove the dust filter (7) from the inside of the container and empty the dust container (14).

Clean the motor filter and, if necessary, clean the inside of the container with a dry cloth.

Replace correctly the motor filter in the container.

Reassemble again the container and the body, inserting at first the lower part and then the upper part, to obtain the complete closure

Note: After an intensive or long use, it is necessary to change the motor filter with a new one.

Don't use the device if the motor filter is broken or worn out.

#### CLEANING AND MAINTENANCE

Before cleaning the device, always remove it from its seat and make sure it has completely cooled.

The device should be cleaned with a dry cloth.

Don't use abrasive detergents.

In order to avoid the risk of short circuit, don't clean the device or its seat with wet cloths and don't use water.

Keep it in a dry and clean place.

Only the dust container (14) and the dust filter (7) can be washed in cold water. Let the parts dry completely before reassembly.

Do not immerse the body of the appliance in water or other liquids.

Do not immerse the power supplier in water or other liquids.

Do not immerse the recharge seat or the transformer in water or other liquids.

Do not wash the appliance or its parts in the dishwasher.

Do not wash any components of the appliance in the dishwasher.

Vacuum cleaner:

DC7.2V 45 W

Battery rechargeable: Ni-Mh AA7.2 V (1.2V x 6) 1400mAh

Class III IP20

Vacuum: 1.4Kpa Dust capacity: 500 ml Liquid capacity: 65 ml

Transformer:

Class II IP20

Input: 230V AC 60Hz

Output: 9V DC 250mA