



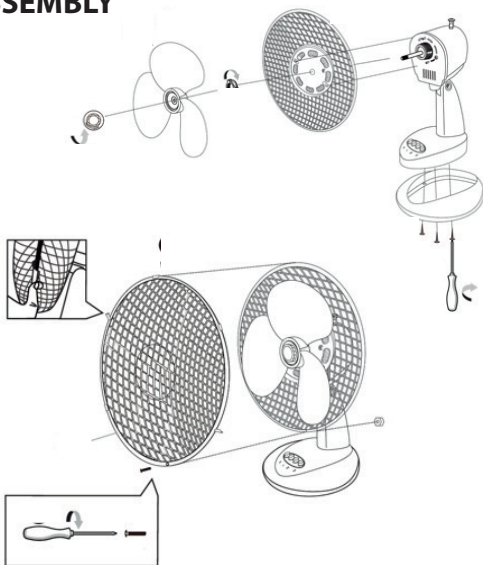
## VE-5834UK / VE-5835UK



### CONTROLS



### ASSEMBLY



## EN | Instruction Manual

### SAFETY

- This appliance shall not be used by children aged less than 8 years. This appliance can be used by children from 8 years and above and persons with reduced physical, sensory or mental capabilities or lack of experience and knowledge if they have been given supervision or instruction concerning use of the appliance in a safe way and understand the hazards involved. Children shall not play with the appliance. Keep the appliance and its cord out of reach of children aged less than 8 years. Cleaning and user maintenance shall not be made by children unless older than 8 and is supervised.
- By ignoring the safety instructions, the manufacturer cannot be held responsible for the damage.
- If the supply cord is damaged, it must be replaced by the manufacturer, its service agent or similarly qualified persons in order to avoid a hazard.
- Never move the appliance by pulling the cord and make sure the cord cannot become entangled.
- The appliance must be placed on a stable, level surface.
- The user must not leave the device unattended while it is connected to the supply.

- This appliance is only to be used for household purposes and only for the purpose it is made for.
- To protect yourself against an electric shock, do not immerse the cord, plug or appliance in the water or any other liquid.

### CONTROLS

1. Oscillation knob
2. Head adjustment screw
3. Speed adjustment buttons

### ASSEMBLY

- Fit the base by pushing it into place on the underside of the fan and secure in place by using the screws provided.
- Unscrew the rear locking ring from the motor shaft in anti-clockwise direction.
- Set the rear cage and fit it well on the two position holes and make sure these holes are properly put through the holes on the rear cage.
- Hold the rear cage and screw the rear locking ring into the motor front cover in a clockwise direction.
- Install the fan blade onto motor shaft and fit the fan blade lock cap.
- Loosen the screw and nut on the bottom of the rear cage.
- Open front cage clips and position onto rear cage ensuring the screw at bottom is aligned between both.
- Tighten screw and nut.
- Close the cage clips over both front and rear cage.

## BEFORE THE FIRST USE

- Take the appliance and accessories out of the box. Remove the stickers, protective foil or plastic from the device.
- Follow the assembly diagram to assemble the product.
- Place the device on a flat stable surface and ensure a minimum of 10cm free space around the device. This device is not suitable for installation in a cabinet or for outside use.
- Put the power cable into the socket. (Note: Make sure the voltage which is indicated on the device matches the local voltage before connected the device. Voltage 220V-240V 50/60Hz).

## USE

- Set the speed adjustment buttons to the desired position.
- To make the fan head oscillate, push down the oscillation knob.
- To stop the fan head from oscillating, pull up the oscillation knob.
- The head of the fan can be adjusted up or down. To do this, loosen the head adjustment screw, adjust the fan to the desired angle and tighten the head adjustment screw.

## CLEANING AND MAINTENANCE

- Clean the appliance with a damp cloth. Never use harsh and abrasive cleaners, scouring pads or steel wool which can damage the device.
- Never immerse the electrical device in water or any other liquid. The device is not dishwasher proof.

## GUARANTEE

This product is provided with a 24 months guarantee. Your guarantee is valid if the product is used in accordance to the instructions and for the purpose for which it was created. In addition, the original purchase (invoice, sales slip or receipt) needs to be retained and to be submitted on request with the date of purchase, the name of the retailer and the item number of the product. The guarantee does not cover damage caused by:

- Accident or unanticipated events (e.g. lightning, water, fire).
- Improper use or transport.
- Disregard of safety and maintenance instructions.
- Other improper treatment or modification.

## ENVIRONMENT



This appliance should not be put into the domestic garbage at the end of its durability but must be offered at a central point for the recycling of electric and electronic domestic appliances. This symbol on the appliance, instruction manual and packaging directs your attention to this important issue. The materials used in this appliance can be recycled. By recycling used domestic appliances, you contribute an important push to the protection of our environment. Ask your local authorities regarding the point of recollection.

## SUPPORT

You can find all available information and spare parts at [www.tristar.eu](http://www.tristar.eu)