

PRODUCT INFORMATION

Item number

SZ-4187

Item description

Robot Vacuum Cleaner

The unequivocal identification of the product

(type of product, trademark, trade name, model and possibly serial number)

1.1.A

★★★
TRISTAR

Robot Vacuum Cleaner

Host: 14.8V === 16W Input: 19.0V === 0.6A

Attention: Use only with JYH12-1900600-BE supply unit

Model No.: SZ-4187

Batch No.: T21895



Do not immerse in any liquid / Niet in water onderdompelen
Ne pas plonger dans l'eau / Nicht ins Wasser hineintauchen

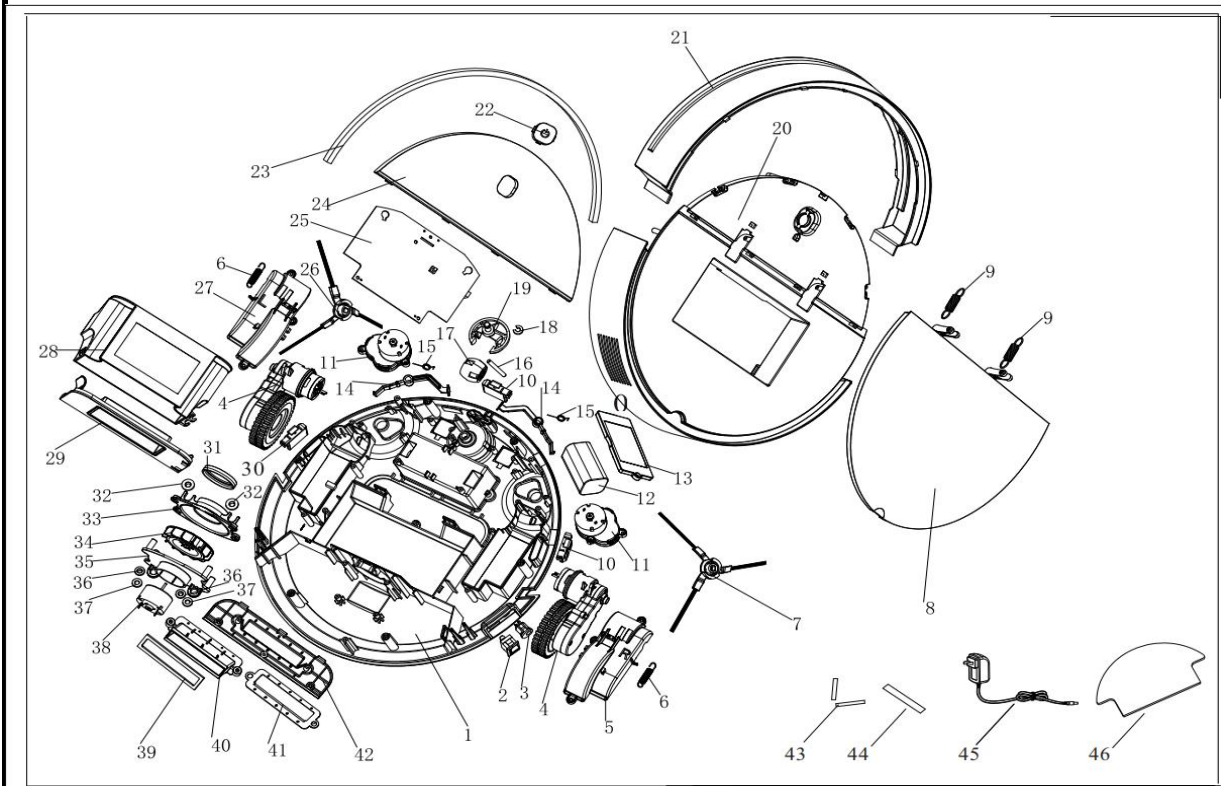
Tristar Europe B.V. Swaardvenstraat 65
5048 AV Tilburg | The Netherlands | www.tristar.eu

1.1.B

A disassembly map or exploded view

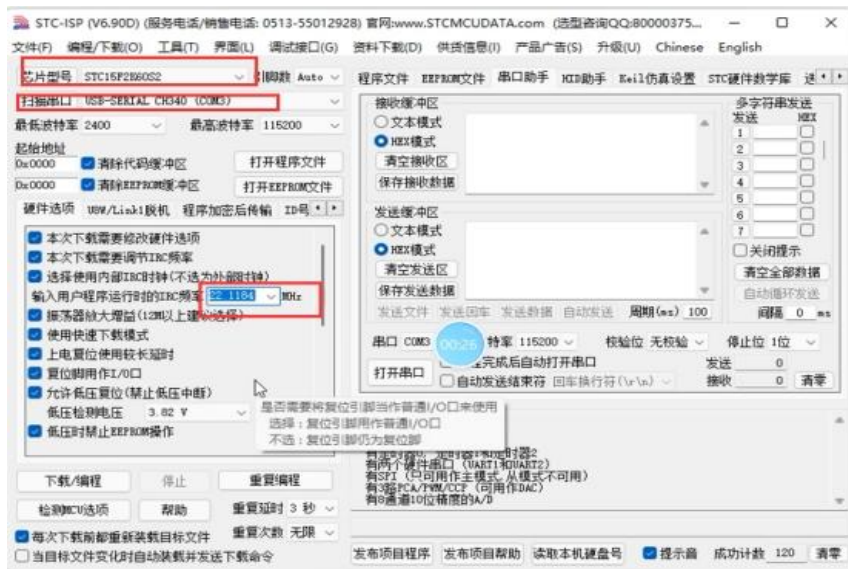
ITEM	English name	QTY.	Material
1	Bottom shell	1	ABS
2	Switch	1	
3	DC socket	1	
4	Wheel assembly	2	ABS
5	Right wheel shell	1	
6	Wheel tension spring	2	SUS 304
7	Right side brush	1	
8	Top panel	1	
9	Spring of panel	2	
10	Cliff sensor assembly	2	
11	Side brush motor assembly	2	
12	Battery	1	
13	Battery cover	1	ABS
14	Front bumper ejector rob	2	PA6+G30
15	Front bumper ejector rob spring	2	SUS 304
16	Front wheel spindle	1	
17	Front wheel	1	ABS
18	Front wheel buckle	2	POM
19	Front wheel bracket	1	ABS
20	Top cover shell	1	ABS
21	Front bumper	1	ABS
22	Button	1	ABS
23	Bumper strip	1	EVA
24	Top panel 2	1	ABS
25	PCB	1	PCBA
26	Left side brush	1	
27	Left wheel shell	1	ABS
28	Dust container	1	ABS
29	Dust container cover	1	ABS
30	Left Cliff sensor assembly	1	
31	Vacuum motor seal ring	1	silica
32	Vacuum motor front shock set	2	silica
33	Vacuum motor top cover	1	ABS
34	Vacuum fan	1	PA6

34	Vacuum fan	1	PA6
35	Vacuum motor bottom cover	1	ABS
36	Vacuum motor back shock set	2	silica
37	Vacuum motor shock pad	2	silica
38	Vacuum motor	1	
39	Dust container seal ring	1	EVA
40	Vacuum inlet	1	ABS
41	Vacuum inlet silica	1	silica
42	Vacuum inlet support	1	ABS
43	Mop left Velcro tape short	1	
44	Mop right Velcro tape long		
45	Adaptor	1	
46	Mop cloth	1	

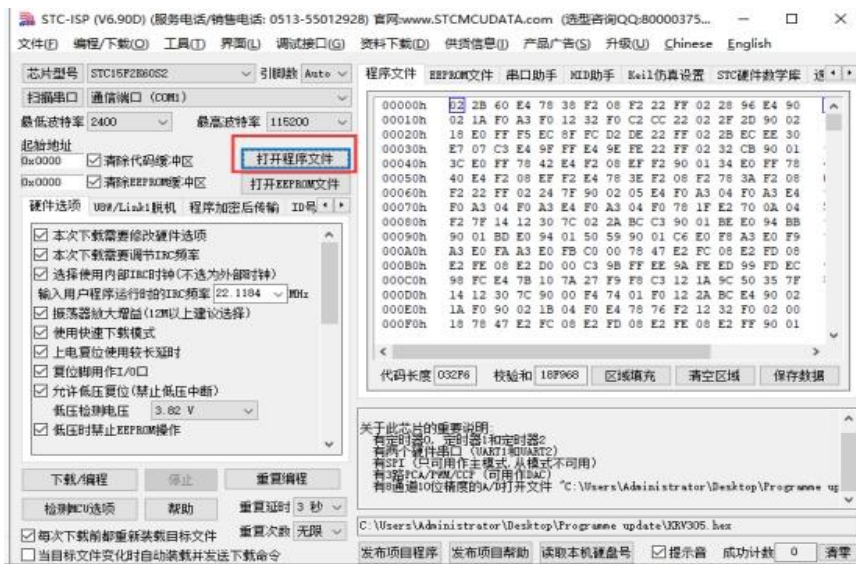


1.1.C

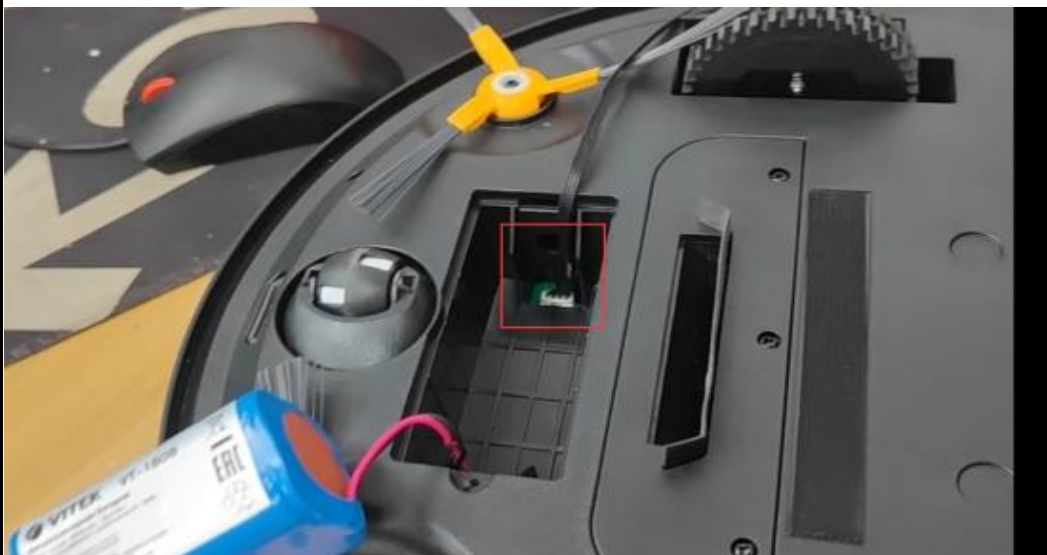
Wiring and connection diagrams



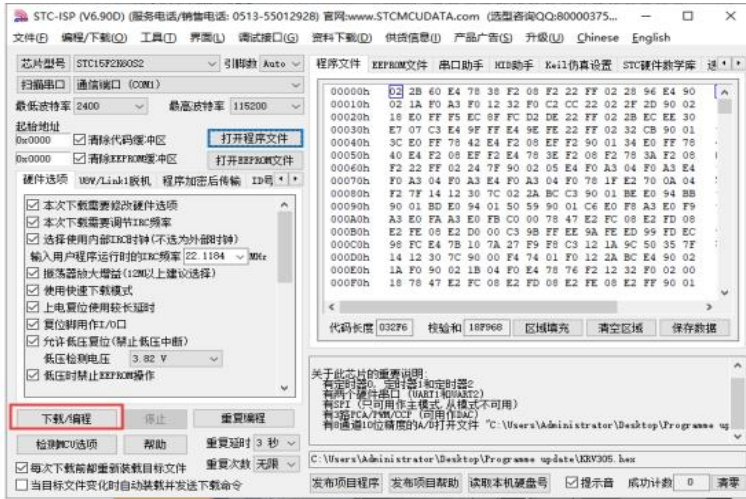
4. Open software *.hex



5. Link the firmware tool with robot vacuum cleaner terminal



6. Click firmware and turn on the button on the side of robot vacuum cleaner



1.1.J	Information on how to access data records of reported failure incidents stored on the product
	NOT APPLICABLE
1.1.K	Technical bulletins
	NOT APPLICABLE
1.1.L	Specific guidance for self-repair (recommended operations, safety and repair instruction, any implications for the guarantee)
	NOT APPLICABLE
1.1.M	How to get access to professional repairers
	NOT APPLICABLE
1.1.N	Failures detection and required action (consumers approach)
	NOT APPLICABLE
1.1.O	User and maintenance instructions

